



FAT DRAGON GAMES

Copyright ©2009 Fat Dragon Games™
All rights reserved
www.fatdragongames.com

Cut solid lines

Score/fold dotted lines

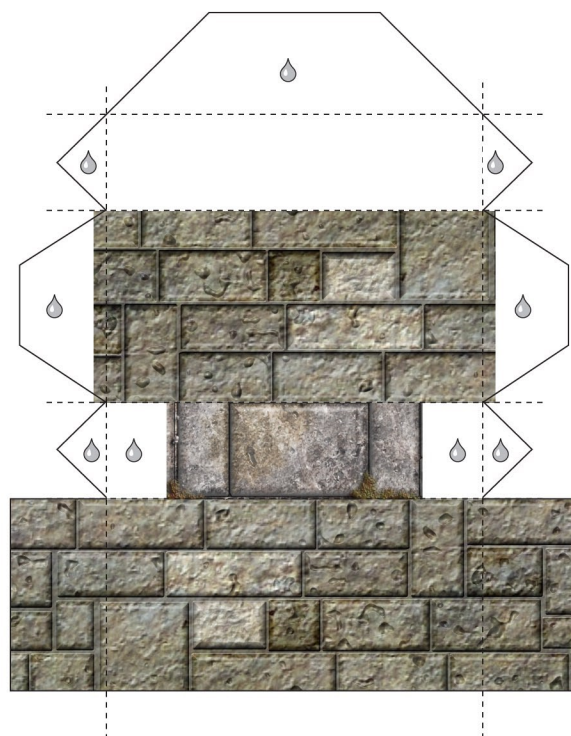
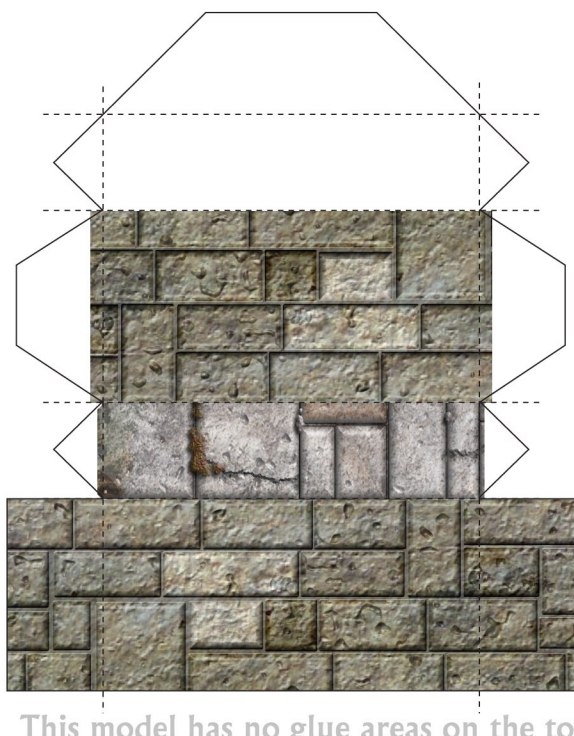
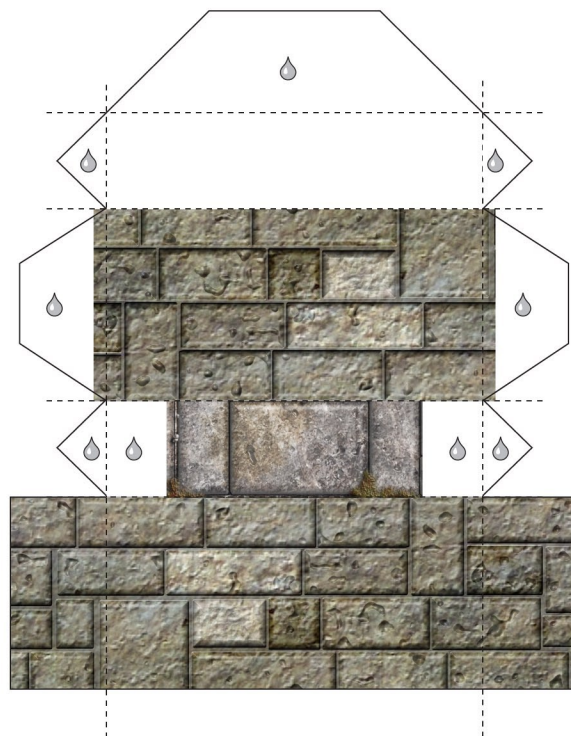
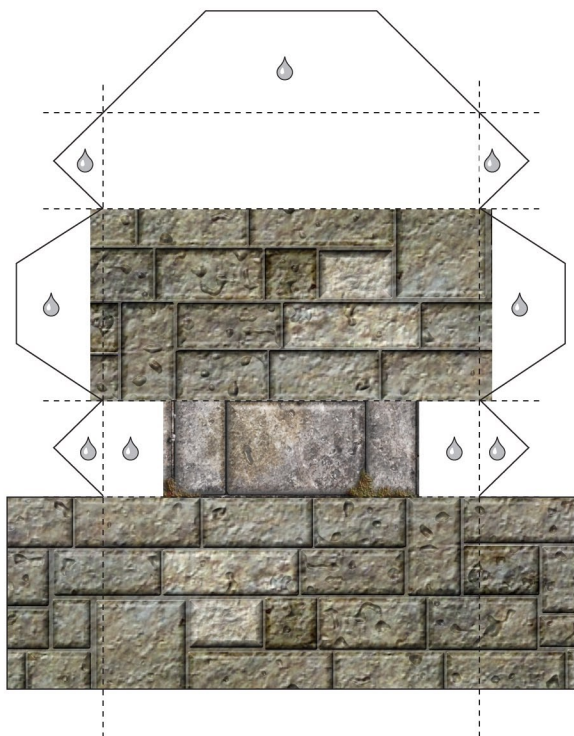
Score/fold on reverse side

Cut out

Glue this area

PLEASE DO NOT SHARE FILES!
Piracy kills small businesses like FDG.
Help us keep our doors open and
making new models for you!

Door or archway extension: assemble this model and glue an arch or door model from the E-Z Dungeon: Deluxe Edition set to the top of it to make a 3" tall model.



This model has no glue areas on the top panel so it can be used without any door or arch piece on top.